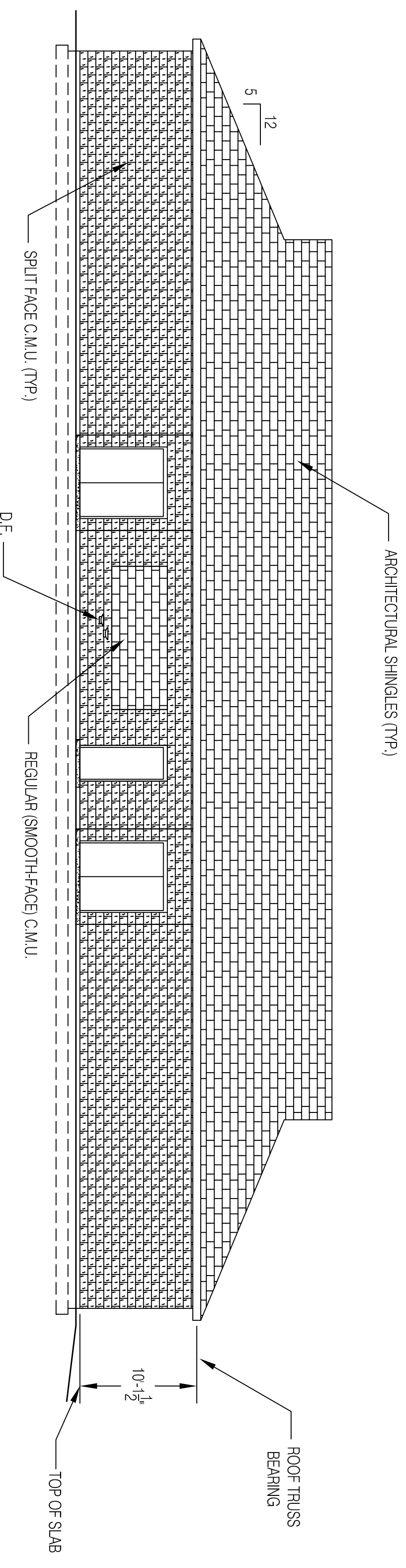
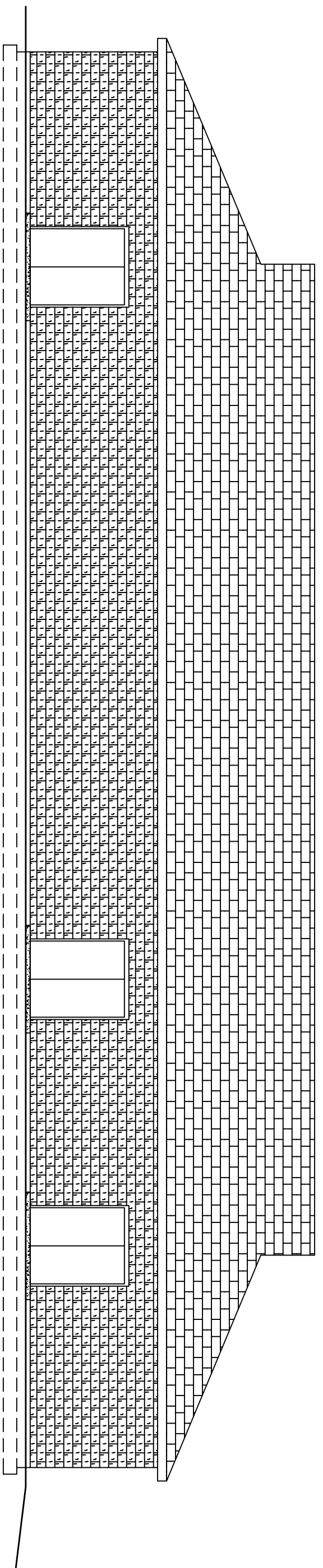


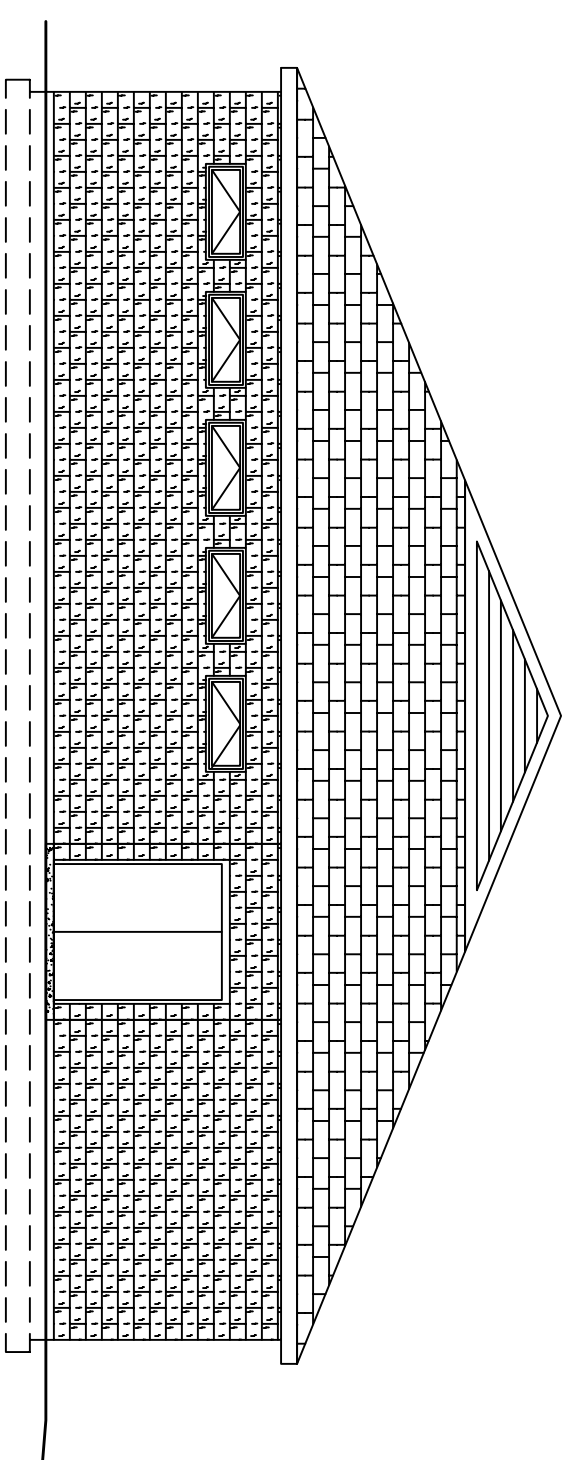
NORTHWEST ELEVATION  
SCALE: 1/8" = 1'-0"



NORTHEAST ELEVATION  
SCALE: 1/8" = 1'-0"



SOUTHWEST ELEVATION  
SCALE: 1/8" = 1'-0"



SOUTHEAST ELEVATION  
SCALE: 1/8" = 1'-0"

WRITTEN DIMENSIONS ON THESE DRAWINGS SHALL TAKE PRECEDENCE OVER DIMENSIONS SHOWN. CONTRACTORS SHALL VERIFY ALL BEARING POINTS, ELEVATIONS AND CONDITIONS ON THE JOB AND ANY DISCREPANCIES SHALL BE REPORTED ON THE DRAWINGS AND CONDITIONS SHOWN BY THESE DRAWINGS.

DESIGNED: CCAP  
DRAWN: CLT  
CHECKED: MSH  
DATE: 02/20/07  
REVISIONS: 1-03-21-07  
2  
3  
4

PROGRESS  
PRINT  
NOT FOR  
CONSTRUCTION

**BHS STADIUM LOCKER FACILITY**  
BLACKSBURG HIGH SCHOOL  
BLACKSBURG, VIRGINIA  
PROJECT NO: 07107

**CRADDOCK - CUNNINGHAM**  
ARCHITECTURAL PARTNERS, P.C.  
10 NORTH STREET, LYNCHBURG, VIRGINIA 24504 434-848-6816 FAX 434-848-4534  
200 COUNTRY CLUB DRIVE SUITE B-3, BLACKSBURG, VIRGINIA 24060 540-551-4577  
EMAIL: INFO@CCAPPCC.COM

EXTERIOR  
ELEVATIONS

A2